



TRANSFORMING WOOD TO STONE

Hexagonal Structural Underlayment for Elevated Decks



THE **BETTER**
WAY TO BUILD
YOUR DECK!

Natural
Stone Pavers

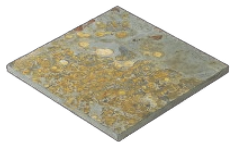
Blue Stone

Brick Pavers

Slate

Granite

Transform your ordinary
wooden deck to...
EXTRAORDINARY
with Marshall Stone and Silca System ®

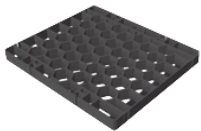


WHAT IS Silca System ®?

Silca System ® is a deck inlay sub flooring grid that spans the space between floor joists to provide a super strong substructure for deck flooring.

Silca System ® ADVANTAGE:

An American-made, UV stable product. The durable **Silca Grate™** grids are designed to withstand freezing temperatures and harsh effects of the sun. Unlike deck boards which are known to warp, crack, distort, split, fade and promote mildew/mold, natural stone and brick pavers are easily maintained and durable. **Silca System ®** enables you to install these heavy-duty materials on your deck, eliminating the need for time-consuming labor and expense of sealing and staining a wooden deck.



WHAT MAKES Silca Grates™ STRUCTURAL?

Silca Grates™ are based on the hexagonally structure of beehives and manufactured from engineered polymers into grids that are 1-1/2" thick.

WHAT TOOLS ARE REQUIRED FOR INSTALLATION?

Drill or compact driver, circular or reciprocating saw, goggles, measuring tape, hammer.

IS IT EASY TO CUT Silca Grate™ ?

Yes. For customized cuts around posts, dryer vents, use a circular saw, table saw or sawzall.

Available at Marshall Stone Architectural Design Centers

North Carolina
8605 Triad Drive
Colfax, NC 27235
Phone: 336-996-4918

Virginia
19730 Virgil H. Goode Hwy
Rocky Mount, VA 24151
Phone: 540-483-2737

Online
marshallstone.com

