



## THE CASTLE COLLECTION



*Featuring*  
**Natural Stone Patio Packs & Finishings**

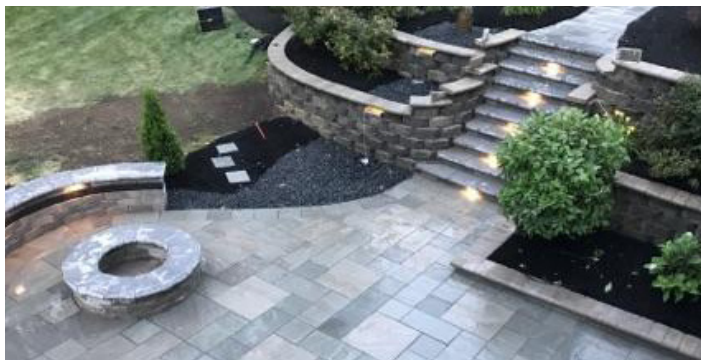




# Castle Collection

## The Patio Pack Convenience

Jumbo sized natural paving stones in convenient patio packs make project waste and expense minimal.



**Flagstone Flooring**



**Castle Grey**



**Castle Buff**

**Jumbo French Pattern**  
 11.5 x 11.5 - 12 Pieces/Pallet  
 11.5 x 23.5 - 6 Pieces/Pallet  
 23.5 x 23.5 - 12 Pieces/Pallet  
 23.5 x 35.5 - 6 Pieces/Pallet

---

= 108 Sq. Ft. of Materials



# Finishing Touches



**Pier Cap**

24 x 24 x 2  
20 Pieces/Pallet  
Chiseled edge on all 4 sides



**Wall Cap**

14 x 24 x 2  
40 Pieces/Pallet  
Chiseled edge along front and back



**Treads**

12 x 72 x 2 -OR- 24 x 72 x 2  
15 Pieces/Pallet 12 Pieces/Pallet  
Chiseled edge along front



Castle Grey



Castle Buff



Castle Grey



Castle Buff



Castle Grey



Castle Buff



**Stepping Stone**

18"  
72 Pieces/Pallet



**Steps**

16 x 36 x 6 -OR- 16 x 48 x 6  
6 Steps/Pallet



Castle Grey



Castle Buff



Castle Grey



Castle Buff

## Seamless Project Solutions

The Castle Collection provides you with seamless solutions to complete your entire project. From patio flooring to coordinating finishing pieces, this collection is perfect for any project big or small!



## The Castle Collection Difference

All of the stones in this collection have a milled bottom surface with a gauged tolerance of +/- 4mm. This consistent thickness makes installation much easier compared to traditional stone products allowing you to complete your project much faster and with less hassle.

## We have everything you need to get the job done

### Accessories

We have everything you need to get the job done.

### Need an Installer?

We can connect you with experienced installers in your area.

### Pickup & Delivery Options

We can have your order delivered to your job site for your convenience.



#### Supplier Notes:

1. Color and texture variations are part of what makes natural stone desirable. No two pieces will ever be the same. 2. Color ranges may vary. Here is what you can expect: Castle Grey: mixed hues ranging from light to dark grey. Castle Buff: mixed beiges, browns and greys with occasional veining and swirl. 3. Iron is part of most natural stone products. Minor discoloration and rusting can be expected after installation and can often add appeal to a finished project. In most cases, iron deposits can be detected on the stone prior to installation. In the case of excessive deposits (greater than 20% of the surface area), please make SiteOne aware prior to installation so we can work together to ensure a satisfactory finished project.



Contact or visit us for more information

